

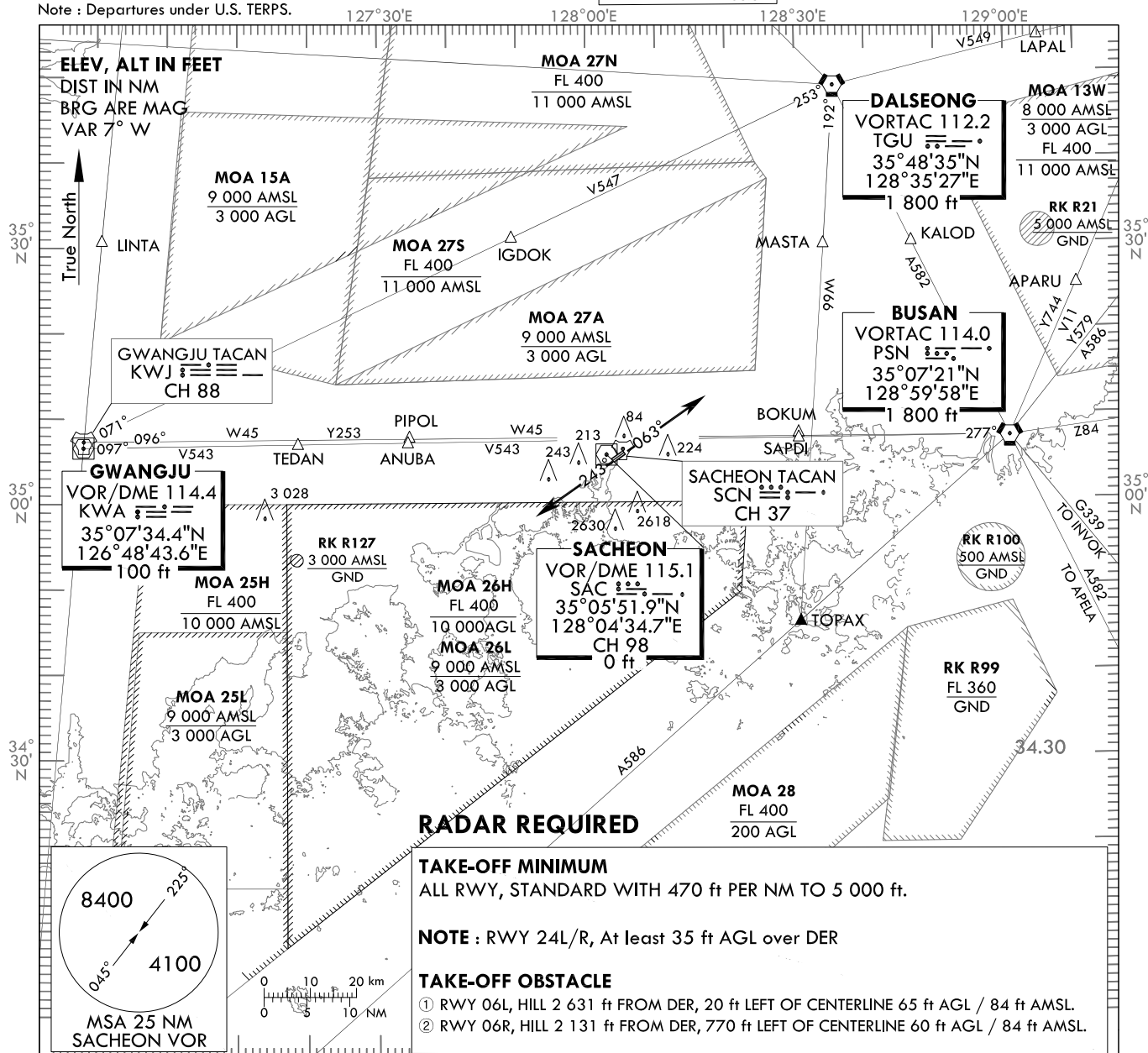
**STANDARD DEPARTURE
CHART - INSTRUMENT(SID)**

TRANSITION ALT 14 000
TRANSITION LVL FL 140

SACHEON DEP 135.4
347.3
SACHEON TWR 118.675
236.6

**SACHEON (RKPS)
RWY 06L/R, 24L/R
SACHEON 5**

Note : Departures under U.S. TERPS.



DEPARTURE PROCEDURE DESCRIPTION

ALL AIRCRAFT : DEPARTURE CLIMB RATE 470 ft/NM TO 5 000 ft.

TAKE-OFF RWY 06L/R : Climb heading 063° or Climb on assigned heading by ATC.....

TAKE-OFF RWY 24L/R : At least 35 ft AGL over DER, Climb heading 243° or Climb on assigned heading by ATC.....

.....Expect radar vector to intercept filed En-route fix or as assigned route by ATC.

Maintain 5 400 ft or assigned altitude(flight level)

Expect filed altitude/flight level 10minutes after departure.

LOST COMMUNICATIONS : If radio contact is not established with departure control prior to reaching 5 000 ft, Continue climb to 8 400 ft before turning to filed fix/Navaid and proceed filed route and altitude.

Change : Information of fix name.

INTENTIONALLY

LEFT

BLANK

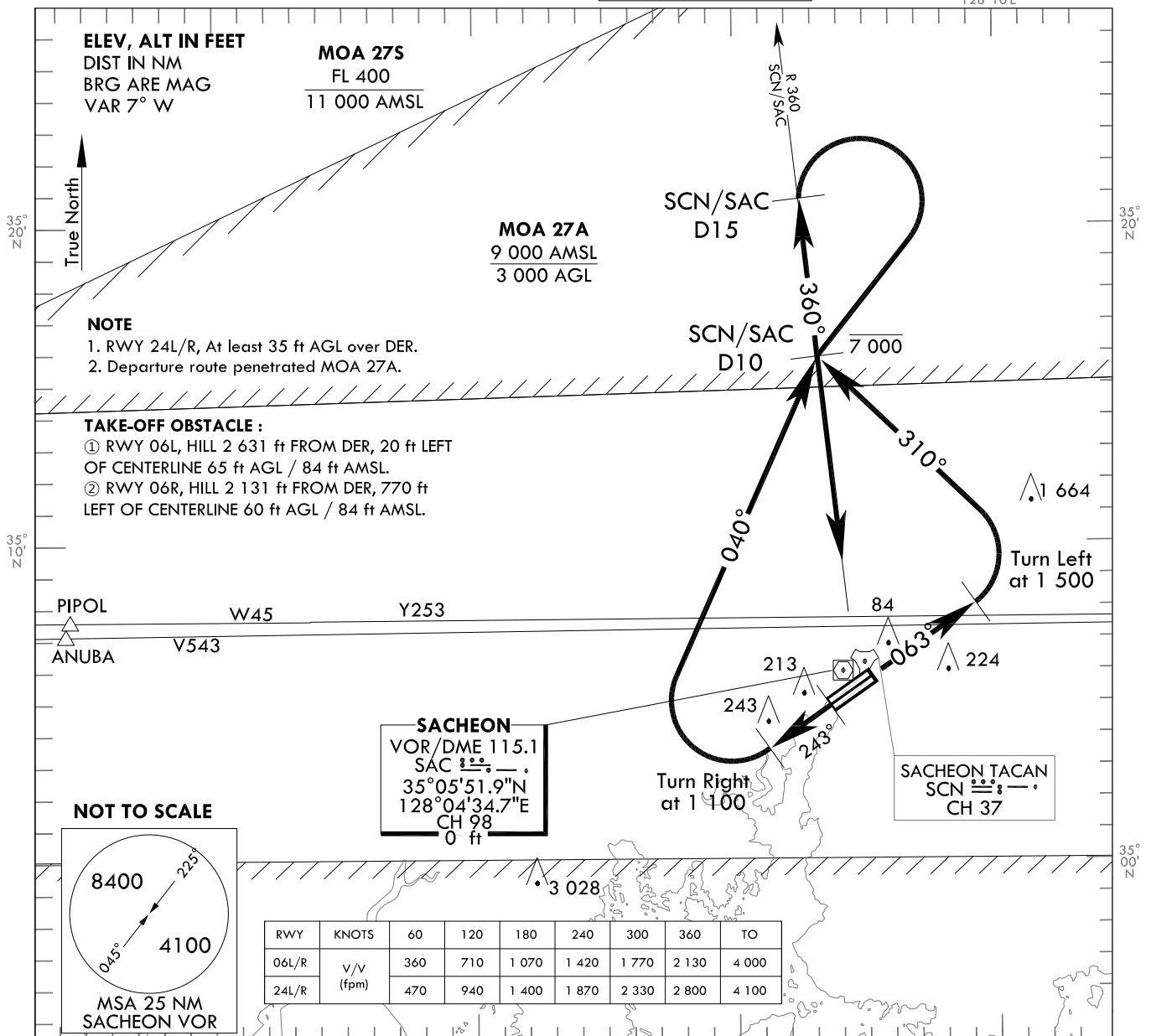
**STANDARD DEPARTURE
CHART - INSTRUMENT(SID)**

TRANSITION ALT 14 000
TRANSITION LVL FL 140

SACHEON DEP 135.4
347.3
SACHEON TWR 118.675
236.6

**SACHEON (RKPS)
RWY 06L/R, 24L/R
SACHEON 6**

Note : Departures under U.S. TERPS.



DEPARTURE ROUTE DESCRIPTION

TAKE OFF RWY 06L/R : Climb heading 063 to 1 500 ft, then left turn heading 310° to intercept R 360 SCN or R 360 SAC thence.....

TAKE OFF RWY 24L/R : At least 35 ft AGL over DER, Climb heading 243 to 1 100 ft, then right turn heading 040 to intercept R 360 SCN or R 360 SAC, thence.....

..... track outbound on R 360 SCN/SAC and cross SCN/SAC D10 at or below 7 000 ft, then on depicted route and climb to assigned altitude or as directed by ATC.

Change : Information of TWR frequency.

INTENTIONALLY

LEFT

BLANK

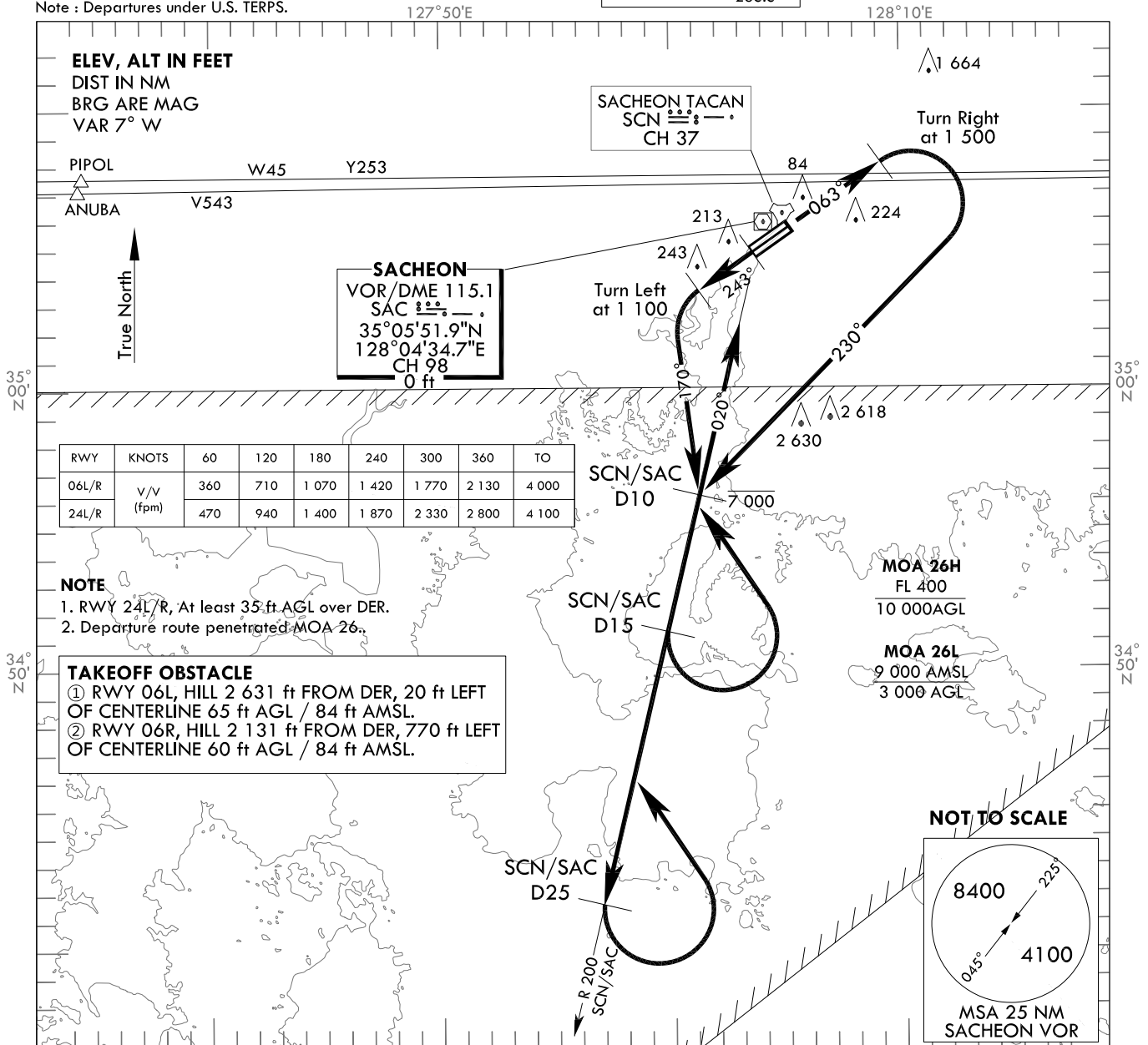
STANDARD DEPARTURE
CHART - INSTRUMENT(SID)

TRANSITION ALT 14 000
TRANSITION LVL FL 140

SACHEON DEP 135.4
347.3
SACHEON TWR 118.675
236.6

SACHEON (RKPS)
RWY 06L/R, 24L/R
SACHEON 7

Note : Departures under U.S. TERPS.



DEPARTURE ROUTE DESCRIPTION

TAKE OFF RWY 06L/R : Climb heading 063° to 1 500 ft, then right turn heading 230° to intercept R 200 SCN or R 200 SAC thence.....

TAKE OFF RWY 24L/R : At least 35 ft AGL over DER, Climb heading 243° to 1 100 ft, then left turn heading 170° to intercept R 200 SCN or R 200 SAC, thence.....

..... track outbound on R 200 SCN/SAC and cross SCN/SAC D10 at or below 7 000 ft, then on depicted route and climb to assigned altitude or as directed by ATC.

Change : Information of TWR frequency.

INTENTIONALLY

LEFT

BLANK